

New

W1662-series

W1662, the new cylinder bed interlock stitch machine



This new developed economical - high - speed cylinderbed machine is capable of a speed of up to **6000 rpm** and ensures high productivity. W1662 - series offers basically almost the same features like W600 - series with additional and **outstanding new technical points:**

- A tight seam and soft seam are both easily achievable with the same machine by changing only the position of the “MTC” cam installation. “MTC” is **Multi Thread Controll**.
- An additional adjustment to the sewing condition is possible.
- Improved ease of operation & maintenance
 - upper metal hand wheel
 - improved oil seals
 - independent adjustable stitch length and differential movement

- colour marked thread guides for easy and simple threading
- tilt adjustment of presser foot sole

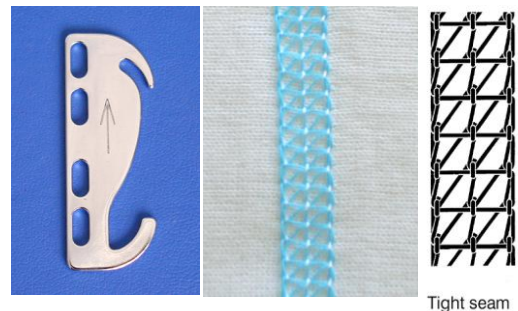
We will explain in more detail:

NEW

- ❖ A tight seam and a soft seam are achieved by one machine, by only changing the cam installation direction (upper and lower) and the appearance and elasticity of the stitch changes.

Tight stitch

W1662-○○○x□□□ □S – type.
Standard factory set up position



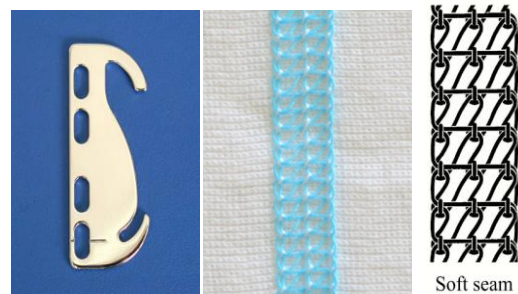
Tight seam

Tight stitch

>>> Mainly the thread tightening is applied when the needle is in the top position

Soft Stitch

W1662-○○○x□□□ □T – type, standard factory set up position



Soft seam

Soft stitch

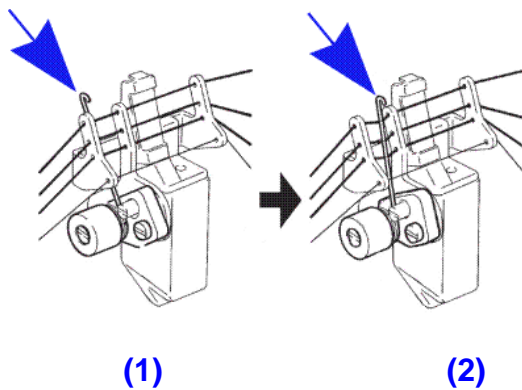
>>> Mainly the thread tightening is applied when the needle is in the low position

❖ The adjustment to the sewing condition is possible.

It is possible to correspond to a wide sewing condition by adopting the needle thread spring.

When it is necessary to make the needle thread loop small as required by cotton thread etc., it is possible to adjust easily.

NEW



Thanks to these features, the operator feels less stress during sewing.

❖ Improved performance and maintenance

1, Equipped with large-sized eye guard

that also covers the left side near the needle and the parts around the needle, increasing safety. **NEW**

The newly introduced cam-type needle thread take-up eliminates several moving parts, such as the needle and spreader thread take-ups that were located on the front of the machine arm, increasing safety and decreasing noise and vibration.

2, Feed dog mechanism

NEW

A **push button** is employed for adjusting the amount of movement of the main feed dog. On the W1600 Series, the amount of movement of main feed dog and diff. feed dog can not be adjusted synchronously, by using the push button. The amount of movement of the differential feed dog should be adjusted independently.

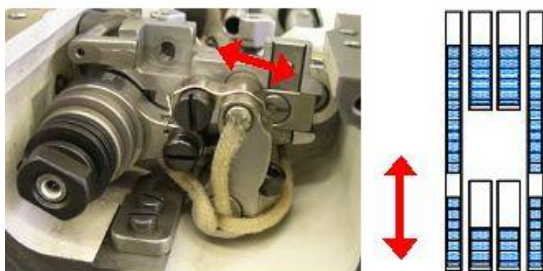


- **Adjustment range for the main feed dog:** 1.0~4.4mm
(W600: 0.6~4.5mm)
 - **Adjustment range for the differential feed dog:** 0.8~6.0mm
(W600: 0.54~5.85mm)
- This enables a higher differential ratio, if required.

2, Tilt adjustment and front to back position adjustment of the feeders

- ✓ Tilt adjustments can be made on the W1600 Series as on the other W Series.
- ✓ Front-to-back positioning adjustments can be made for the differential feed dog.

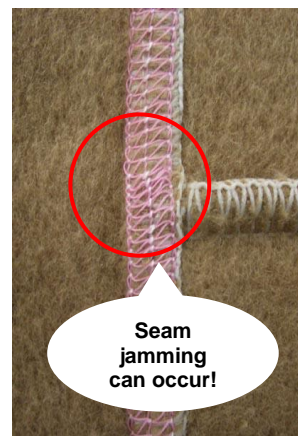
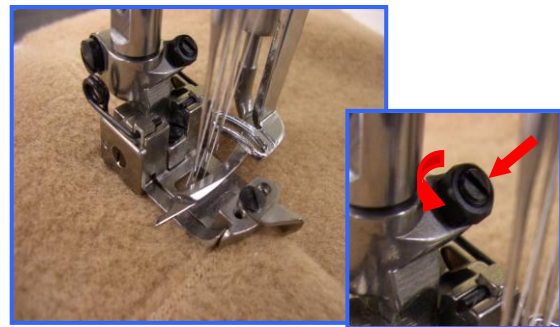
NEW



The front – to – back position adjustment prevents the fabric on dropping in the slots between main feed dog and diff. feed dog in case of very short stitch length.

3, Presser foot tilt **NEW**

The presser foot tilt is adjustable.



Equipped with a presser foot on which tilt adjustments can be made easy (W1662-01G). These machines can sew over cross seam sections more smoothly when sewing heavy weight fabrics.

4, Lubrication and drain mechanism

- forced drain mechanism for the needle bar area, like W-series
- forced drain assembly for the cylinder bed area

NEW



NEW

- added oil seal for the shaft of the feed dog up-and down movement and for the differential front to rear movement

NEW

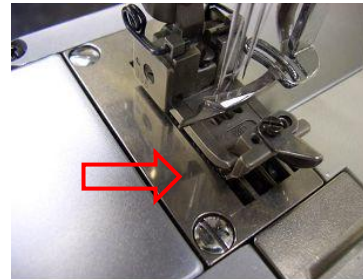
- An oil seal has been added to the internal side of the spreader shaft bushing and the presser foot shaft bushing.



5, Rust-proof measures NEW

are employed for various parts,

- such as the specially coated needle plate
- and the differential feed adjustment lever



4, Loper thread take-up

- Simple to raise by push button for easy threading (like W-series)

NEW

- Complete thread guide block is removed just by loosening 2 easy accessible screws.



- Various parts have been changed from black oxide to chrome plating



6, Left hand knife FT0C

W1662 is already available in subclass – 35 for hemming, with trimming the edge of the turned down hem, for achieving high quality seams, especially on articles with side seams.

- FT0C ensures that the fabric is always inside the seam (optional 1 - 2 mm outside the seam)
- hem width can be performed very accurate all way round with a tolerance of +/- 1 mm



*Showing the detachable device FT0C (common with W2600).
Knife up- and down stroke: 3 ~ 6 mm
Trimming left - right position: 1- 5 mm
(from needle drop point
max. speed: 5000 rpm)*

Thread cutter UT

UT1E = solenoid driven UT
(with thread wiper)
UT1L = solenoid driven UT
(without thread wiper)
UT3J = pneumatic driven UT
(with air blower type thread wiper)
UT3M = pneumatic driven UT
(without thread wiper)
UT4M = pneumatic driven under bed
and top cover thread trimmer
(without thread wiper)

W1662 - Common Specifications

Subclasses:	-01 (Multi use for -03, -08) -02 and -05
Max. speed:	6,000 rpm * The maximum speed is different depending on the subclass and the sewing condition (subcl. -35 with FT0C ~ 5000 rpm)
Circumference of arm:	270 mm
Pressure foot lift:	5.4 mm (-01 / -02) · 5.8 mm (-08)
Number of Needles and Needle distance:	2-needle (3.2 mm / 4 mm / 4.8 mm *) 3-needle (5.6 mm / 6.4 mm)
Standard needle:	UY128GAS
Presser foot:	Tilt type pressure foot which sews smoothly over the cross seam is adopted. * Only for -01 type
Feed type:	Differential bottom feed
Stitch length:	1,0 ~ 4,4 mm
Differential movement:	0,8 ~ 6,0 independent driven)
Standard stitch length:	11 ~ 14 stitches / inch (BS, BT needle plate) Less than 10 stitches / inch (CT needle plate)
Stitch length adjustment:	Push button type
Diff. feed amount adjustment:	Intermittent type (without micro adjustment)
Devices :	UT / FT / (RP not assigned yet)

Available Subclasses:

-01G = plain seaming

-01G is including guides for covering -03, guides for hemming -08 and bracket for binder -02

-03F = covering

-08 = hemming

-035 = hemming with under edge trimming (FT0C)

Ulrich Rabe, PE