



PEGASUS®

WT

WT200: Variable top feed, Small Cylinder bed,
interlock stitch machines

WT500: Variable top feed, flatbed,
interlock stitch machines

WT600: Variable top feed, Cylinder bed,
interlock stitch machines



The WT Series of interlock stitch machines independently driven top feed mechanism thread while inheriting all of the features of

Point 1

A high level of quality is achieved on sewn products with the independently driven top feed mechanism

This mechanism increases feeding efficiency.

More uniform and efficient feeding solves the following

problems, producing beautifully finished stitches.

- Plyshifting of top and bottom fabrics
- Seam jamming on cross seam sections and the associated stitch skipping
- Twists in hemming operations
- Twists and/or yarn distortion on the tape in tape binding operations
- Waves produced on sewn products in covering operations

Point 2

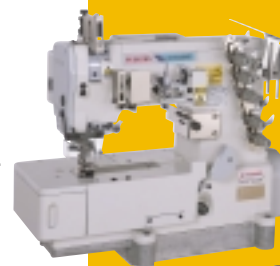
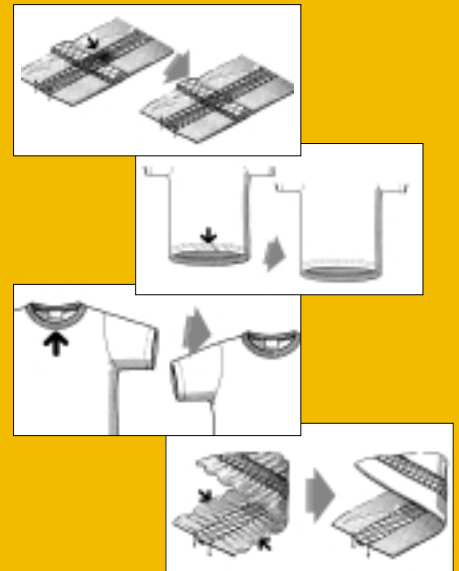
Full line of subclasses

Thanks to this feature, Pegasus' WT Series sews various kinds of materials from light and difficult-to-sew fabrics for underwear to heavy weight ones for outer wear with designs.

Point 3

The Series is equipped with various types of cylinder beds, providing suitability for many kinds of operations and a wide variety of sewn products

- The WT200 Series has the smaller cylinder bed that increases operational efficiency.
Circumference of the cylinder bed: 177mm
This facilitates the sewing of smaller tubular goods that are normally difficult to sew, such as neck and/or sleeve openings of children's wear.
The distance from the left end of the cylinder bed to the needle drop hole is short (35mm), improving fabric handling ease and increasing operational efficiency.
- Handling larger fabrics is effortless on the flatbed of the WT500 Series. This flatbed reduces operators' fatigue.
- The WT600 Series is suitable for sewing tubular goods, such as neck and/or sleeve openings of children's wear.
Circumference of the cylinder bed: 270mm



feature an with top cover the W Series



WT Specifications in common

- | | |
|--|---|
| ● Max. speed | 5,500 rpm |
| ● Stitch length | Max.4.5mm (WT200 Series) |
| ● Needle space | 2-needle machines
(2.4 mm, 3.2 mm, 4.0 mm, 4.8 mm,
5.6 mm, 6.4 mm)
3-needle machines
(4.8 mm, 5.6 mm, 6.4 mm) |
| ● Presser foot lift | 7mm |
| ● Differential feed ratio | 1:0.8 ~ 1:1.4 (WT200 Series)
1:0.5 ~ 1:1.3 (WT500 Series)
1:0.6 ~ 1:1.3 (WT600 Series) |
| ● Front-to-back movement of the top feed dog | Max. 6.0 mm |
| ● Up-and-down stroke of the top feed dog | Max. 5.0 mm |

* Details differ according to subclasses.



Point 4

All subclasses are equipped with a HR device (upper and lower) that protects the fabrics and threads against heat

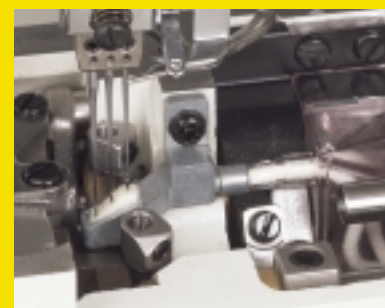
This device cools the needles when they generate heat with the machine running at high speed, preventing yarn severance and thread breakage. In addition, the threads move smoothly to produce uniform stitches.

* The WT200 Series can be equipped with an upper, but not a lower, HR device.

Point 5

The Series is equipped with a movable needle guard that prevents stitch skipping

This needle guard accurately holds the needles at the moment the lower looper enters the needle thread loops, preventing stitch skipping. This needle guard also prevents the needles and the looper from being damaged. In addition, timing at which the needle guard receives the needles can be adjusted according to the thread to be used.



Other Features

■ The Series forms ideal needle thread loops

Timing at which the needle threads are supplied can be adjusted in accordance with the needle bar motion, so ideal needle thread loops are formed according to the characteristics of the thread to be used.

■ Covers that are widely opened

The front and side covers are widely opened so that you can easily adjust and clean each part.

■ Easy-to-thread the looper thread

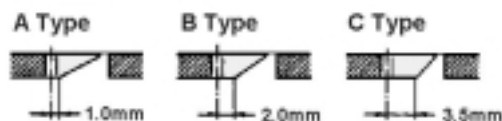
The thread guide bracket for the looper thread take-up pops out toward the operator, so threading the looper is easy.

■ Three kinds of needle plate fingers

A Type: For sewing light weight fabrics with small stitch lengths at more than 15 spi., such as underwear.

B Type: For sewing light to medium weight fabrics with stitch lengths of 11~ 14 spi., such as T-shirts, polo shirts.

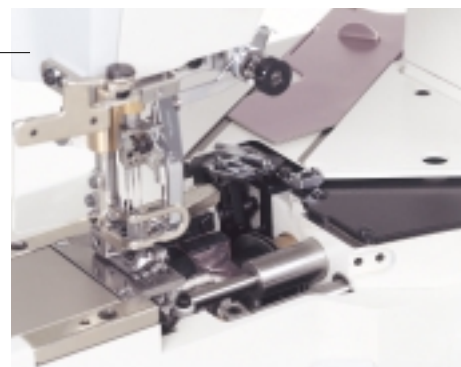
C Type: For sewing heavy weight fabrics with coarse stitch lengths at less than 10 spi., such as sweat shirts, outer wear.



Cross sections of the needle plate fingers

■ Lubrication/drain system

Each part on the machine is always forcibly lubricated using a pump. Oil circulation during sewing can be effortlessly checked from the oil sight window on the arm cover (top). The needle bar and parts around the cylinder bed are forcibly drained using a trochoid pump. Oil level can be easily checked from the oil sight window on the right under the bed.



■ Equipped with an oil filter

This oil filter holds back any dust in the oil. Since clean oil always circulates inside the machines, each machine can be used under good conditions for a long time because the life of the internal mechanisms is extended for a long period.

*Note that it is necessary to periodically replace the oil and/or the oil filter.

Replacing the filter can be easily done from the outside.



■ Easy-to-adjust top feeding amount

This adjustment can be easily made by turning the knob.



■ Easy-to-adjust feeding amount and/or differential feed ratio

Feeding amount:

On the WT500 Series all you have to do is press the push button while turning the machine pulley.

On the WT200 and WT600 Series the adjustment can be easily made by hand while checking the scale plate.

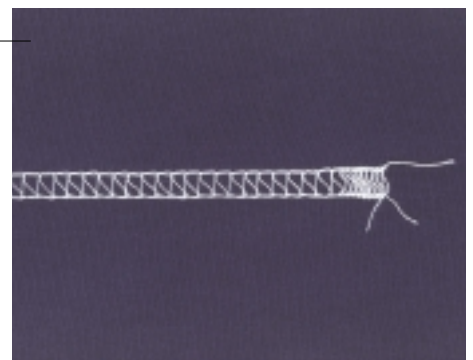
You can easily adjust the differential feed ratio at the operator's stage using the adjustment lever.



■ Condensed stitching

To prevent the seams from unraveling the machine can use this device that produces condensed stitches at the end of sewing.

* The MS device cannot be installed on the WT500 Series.



WT Devices

■ Thread trimmer (UT)

To cut the threads you simply press the treadle with heel. No foot needed. This feature allows you to concentrate entirely on sewing, dramatically increasing production efficiency. If the UT includes the capability of lifting the presser foot, the presser foot is automatically lifted after the threads are trimmed. Then you can immediately place the fabric.

● Underbed thread trimmer

Cuts the needle and looper threads. If the UT has a thread lifter, it picks up the needle threads after they are trimmed, you can move to the next operation.

● Top cover thread trimmer

Cuts the top cover thread as soon as the needle and looper threads are trimmed. Eliminates the need for a bothersome operation to cut the top cover thread, increasing production when the operator finishes the cover thread.

■ Presser foot lift (PL)

Reduces operators' fatigue. Pressing the treadle actuates the mechanism to raise the presser foot.

If you install only the PL, a pneumatic type is available.

■ Condensed stitching device (MS)

Automatically produces condensed stitches at the end of sewing without stopping the machine. No unraveling occurs. Eliminates the need for bartacking and provides high quality products. This MS device cannot be used together with a C type of needle plate finger, and installed on the WT500 Series.

■ Tape/Thread chain cutter (TK/AT)

Cuts the tape and/or thread chain at the start and end of sewing. There are two types of driving methods available, pneumatic and electric.

TK: Manual type

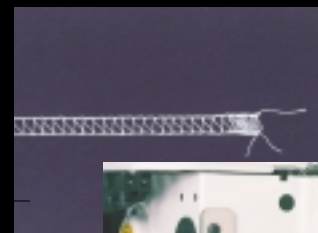
AT: Automatic type

■ Flat type vacuum chain cutters (KH)

Device that sucks up the thread chain by air and cut it. Manual cutting of thread chains with scissors is not necessary.

■ Open/close type of hemming guide (HG)

Provides uniform hem width in a hemming operation. Simplifies the operation, thus increasing quality of sewn products. In addition, the hemming guide can be opened/closed, so positioning the fabric is easy.



■ Fabric trimmer (FT)

Trims the fabric edge during sewing, providing neatly finished products.



■ TW (Thread break detector)

The machine automatically stops as soon as the TW detects thread breakage during sewing. This reduces trouble caused by thread breakage and saves time and labor to restore the machine.

All of the subclasses of the WT500 and WT600 Series can employ the TW, but the W600 Series cannot use the TW together with the HR device (lower).



■ Bottom fabric illuminating light

Since this light illuminates the fabric from underneath, the fabric edge is visible to you in a hemming operation. Hemming difficult-to-sew fabrics is easy. Thanks to this feature, sewn products are stabilized in quality.



WT Series Subclasses

Variable top feed, small cylinder bed, interlock stitch machines: WT200 Series

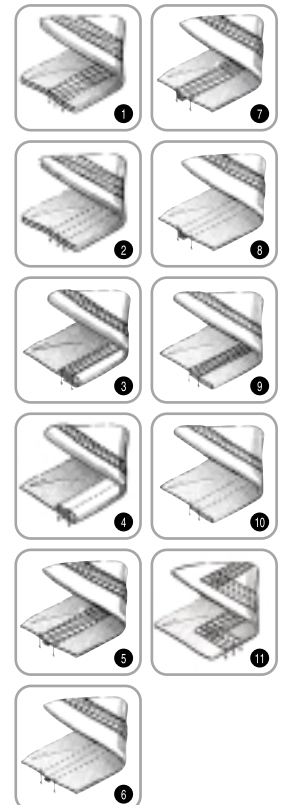
Seam	Application	Model	No. of needles	No. of threads	Max. machine speed (rpm)	Remarks
① ②	Plain seaming light to medium weight fabrics Available for a wide range of applications using various guides and/or attachments	WT264-01	2,3	3-5	5,000	
⑤ ⑥ ⑦ ⑧	Covering light to heavy weight fabrics Covering overlock seams on T-shirts or sweat shirts	WT264-03	2,3	3-5	5,000	Flattening out/Folding over overlock seams
⑨ ⑩	Hemming light to medium weight fabrics Hemming sleeves and/or bottoms of T-shirts, polo shirts	WT264-08	2,3	3-5	5,000	

Variable top feed, flatbed, interlock stitch machines: WT500 Series

Seam	Application	Model	No. of needles	No. of threads	Max. machine speed (rpm)	Remarks
① ②	Plain seaming light to medium weight fabrics Available for a wide range of applications using various guides and/or attachments	WT562-01	2,3	3-5	5,500	
③ ④	Binding tape on light to medium weight fabrics Binding tape on neck openings of underwear or T-shirts	WT562-02	2,3	3-5	5,500	Auxiliary work tables for placing the tape to be used (TR10)
⑪	Angled stitching on light to medium weight fabrics, such as women's underwear, sweat shirts and outer wear with designed stitches	WT562-82	2,3	3-5	5,500	

Variable top feed, cylinder bed, interlock stitch machines: WT600 Series

Seam	Application	Model	No. of needles	No. of threads	Max. machine speed (rpm)	Remarks
① ②	Plain seaming light to medium weight fabrics Available for a wide range of applications using various guides and/or attachments	WT664-01	2,3	3-5	5,500	
⑤ ⑥ ⑦ ⑧	Covering light to heavy weight fabrics Covering overlock seams on T-shirts or sweat shirts	WT664-03	2,3	3-5	5,500	Flattening out/Folding over overlock seams
⑨ ⑩	Hemming light to medium weight fabrics Hemming sleeves and/or bottoms of T-shirts, polo shirts	WT664-08 WT664-35	2,3 2,3	3-5 3-5	5,500 5,500	-35A, -35M: Fabric trimmer (FT) Openclse type of hemming guide (HG) -35B, -35N: Fabric trimmer (FT)



PEGASUS®

PEGASUS SEWING MACHINE MFG.CO.,LTD.
5-7-2,Sagisu,Fukushima-ku,Osaka 553-0002,Japan
Phone:81-6-6458-4739 Telefax:81-6-6454-8785
<http://www.pegasus.co.jp>

